

The Forestry Commission in Yorkshire & The Humber

Vince Carter
Regional Development Manager
Forestry Commission

- Roles & Functions of the Forestry Commission
- Priorities for forestry in Yorkshire & The Humber
- How the FC works with local authorities
- Funding opportunities.....

Government Department
responsible for forestry in
Great Britain

Protect and expand Britain's
forests and **increase their**
value to society

by managing the
Public Forest Estate
and through **Advice,**
Grants & Licences



Membership

- Chair - Right Reverend James Jones, Bishop of Liverpool
- ICF; RSPB; Ramblers Association; ConFor; Wildlife Trusts; Woodland Trust; Alan Knight (Founder, Single Planet living ltd); National Trust; Sir Harry Studholme (Forestry Commissioner); John Varley (Estates Director, Clinton Devon Estates); William Worsley (Country Land and Business Association President).

Terms of Reference:

- Advise on **future direction of policy** for forestry in England;
- Advise on the **role of the Forestry Commission** in implementing policy – increasing woodland cover, enhancing public benefits, biodiversity etc
- Advise on the **role of the Public Forest Estate**

Timetable:

- Report to SoS in April 2012, with progress report in Autumn 2011

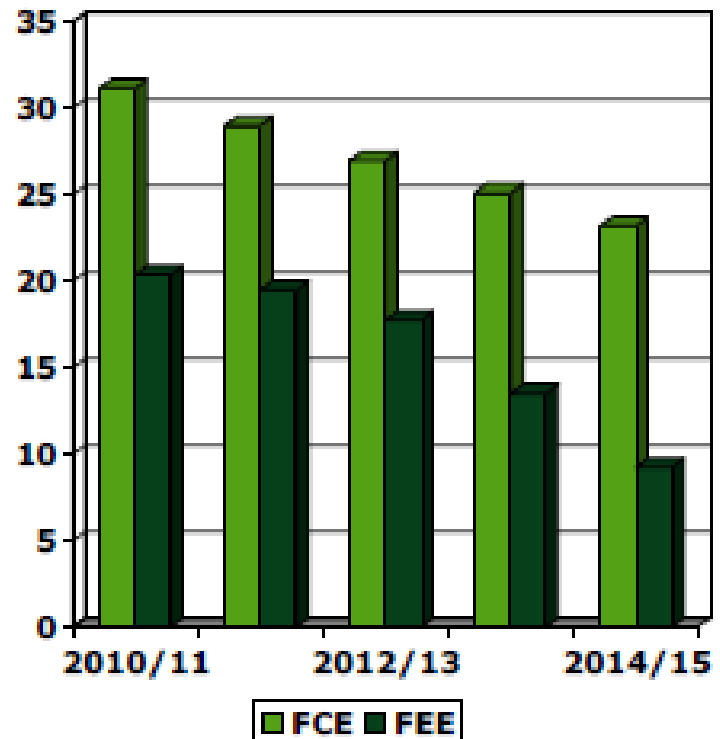
Call for Views:

- Launched on May 19th, closing date July 31st

<http://www.defra.gov.uk/rural/forestry/panel/>

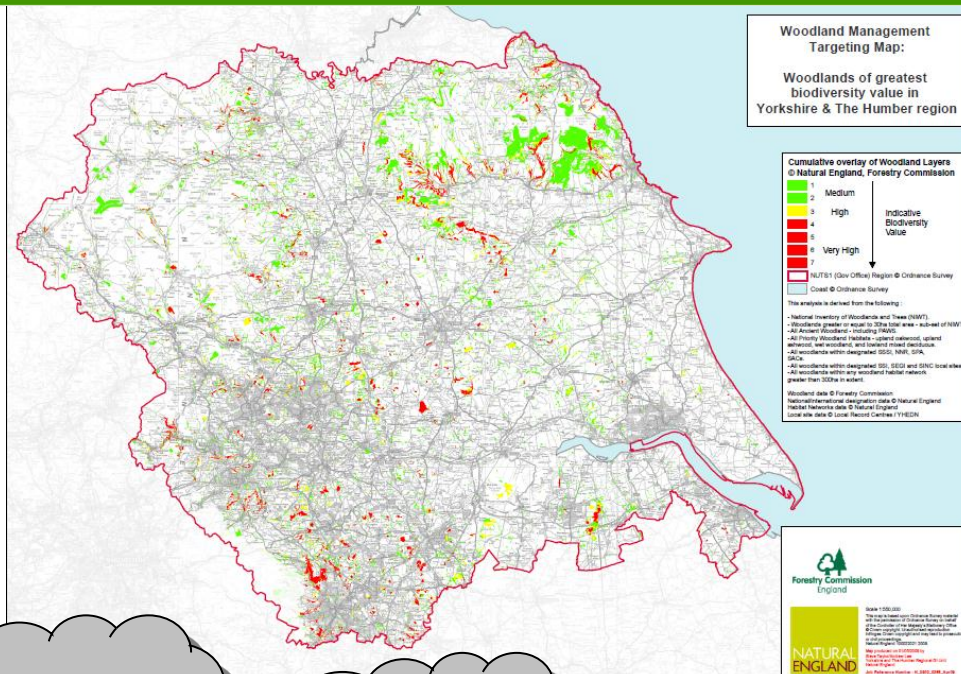
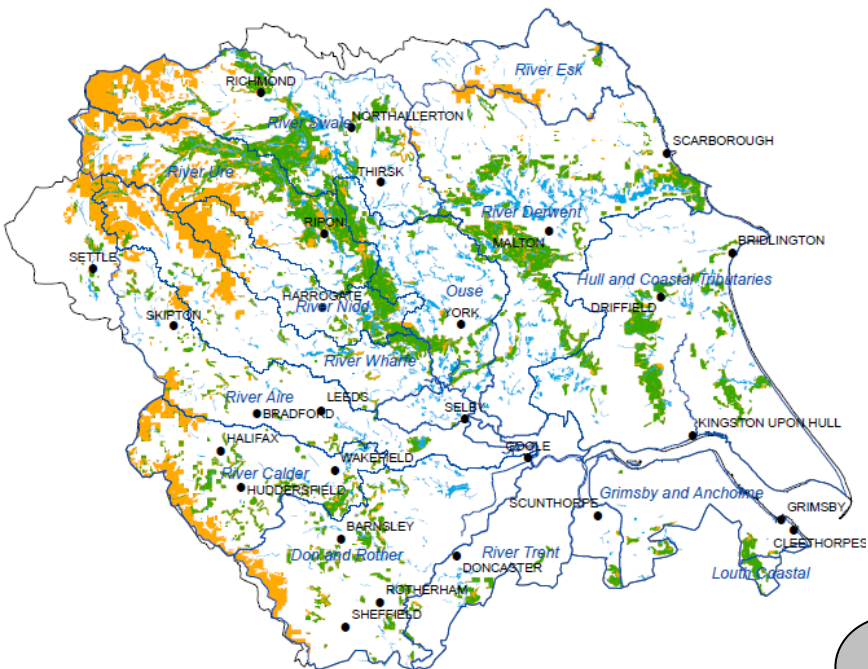
- Reduction in Defra funding by 25% by 2014/15
- Stopping the use of land sales as means to balance the books (currently £8m per annum)
- Change what the Forestry Commission delivers and how it is delivered to reflect the Government's new policies and approach.

Change in Funding (£m)





Regional Priorities



5,000 kg Fossil CO₂

Oil



4,140 kg Fossil CO₂

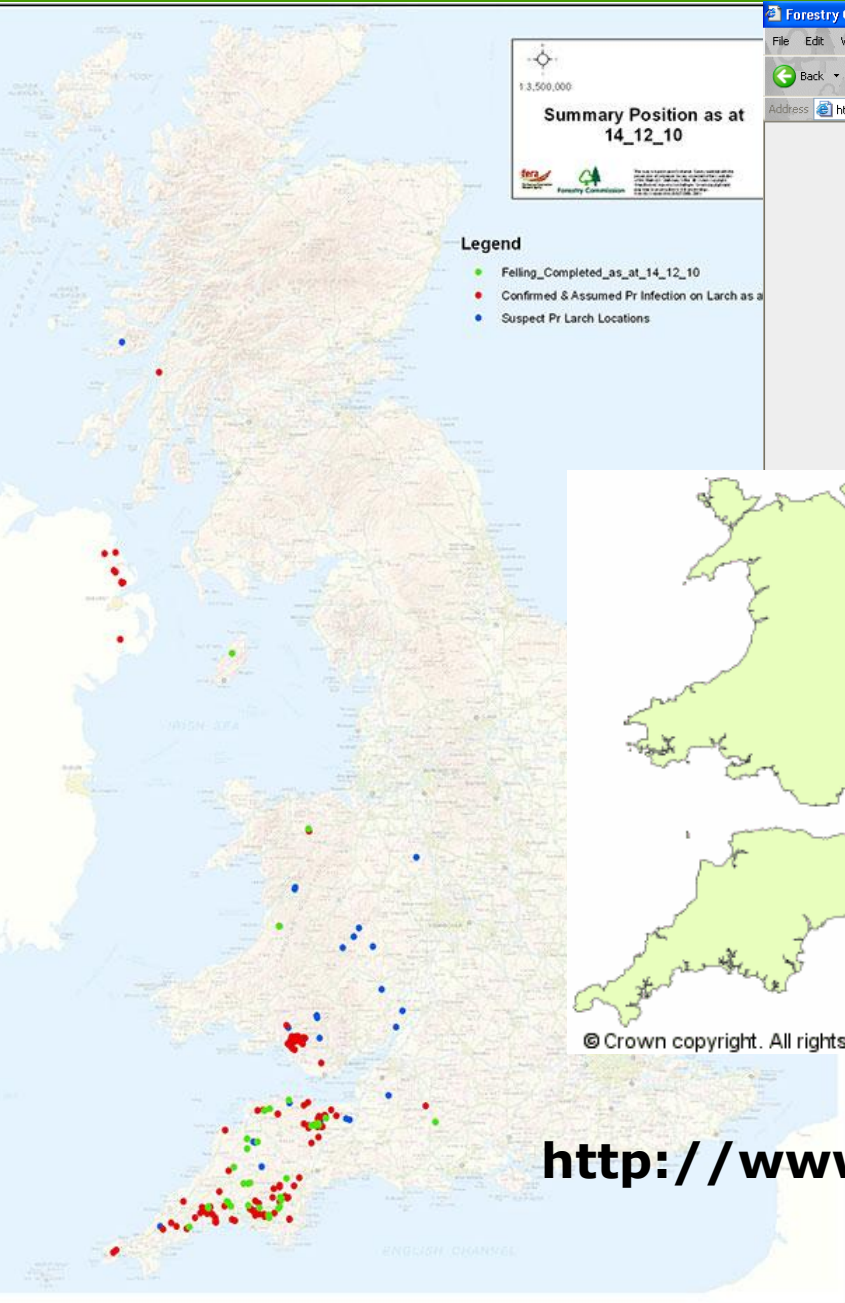
Gas



90 kg Fossil CO₂

Wood





Summary Position as at
14_12_10

- Legend**
- Felling Completed as at 14_12_10
 - Confirmed & Assumed Pr Infection on Larch as at 14_12_10
 - Suspect Pr Larch Locations

Forestry Commission - Plant health - Pests and diseases - Microsoft Internet Explorer provided by BSD Ver 6 (Release 1).

File Edit View Favorites Tools Help

Back Forward Stop Home Search Favorites

Address <http://www.forestry.gov.uk/forestry/infd-6ab15v>

Forestry Commission Home Quick links Library Help

Great Britain About us Contact us News Search

Tree Health and Biosecurity

- Plant Health contacts
- Protected zone surveys
- Phytophthora
- Biosecurity Programme Board

Pests and diseases

With a recent increase in findings of new pest and diseases it is clear that Britain's trees are under unprecedented threat. Our science indicates that climate change will create the conditions for even more pest activity.

These heightened threats require us to take a more strategic approach to forest and tree health and we have recently formed a [Biosecurity Programme Board](#), with members drawn from a number of organisations with environmental interests in the private and voluntary sectors together with our own experts from the Forestry Commission and [Forest Research](#).

it in Britain are:

- [Bleeding canker of Horse Chestnut](#)
- [Horse Chestnut leaf miner](#)
- [Oak processionary moth](#)
- [Red band needle blight](#)
- [Horse Chestnut AOD](#)

ase affecting oak trees in parts of Britain, one species previously unknown to be involved.

[Horse chestnut \(Pseudomonas syringae pathovar castaneae\)](#) causes death to horse chestnut trees. Up to 50% of chestnut trees have symptoms.

[Asian longhorn beetle \(Anoplophora glabripennis\)](#) - is present in the Asian region, practically everywhere that it has been introduced since it was first discovered in Britain in 1982.

Related news

16/06/2011 [Important New Guidance Published On Protecting Forests From Pests And Diseases](#)

10/06/2011 [Strategy Launched To Tackle Pest And Disease Threats To Britain's Trees](#)

02/06/2011 [New Guide To Tree Species For Use In Britain](#)

[more...](#)

Related pages

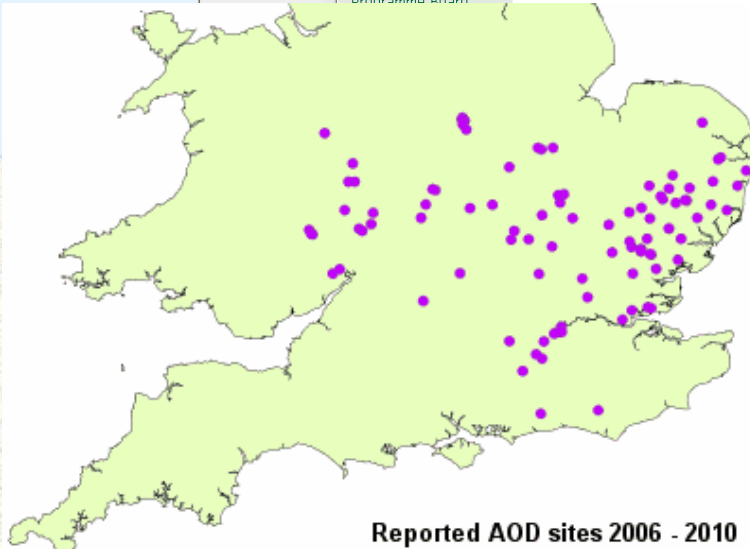
[Research into pests and diseases](#)

Related documents

[Guidance for inspectors](#)

twitter

[about 9 days ago](#) we said,



Reported AOD sites 2006 - 2010

© Crown copyright. All rights reserved. Forestry Commission 100025498 (2010)

<http://www.forestry.gov.uk/forestry/infd-6ab15v>

Partnership working:

- **White Rose Forest** – West Yorkshire/Leeds City Region
- **South Yorkshire Forest Partnership** – former community forest
- **HEYwoods** – Hull & East Yorkshire
- **Yorwoods** – North Yorkshire, but now across Yorkshire & The Humber

Greater Yorkshire Tree Officer Group (GYTOG)

Grants and licences work

Big Society / Localism – Total Environment / Single Voice

- The Big Tree Plant is a campaign to encourage people and communities to plant more trees in England's towns, cities and neighbourhoods.
- £4.2m available to support tree planting schemes
- First round of applications now decided – 107 received (14), 30 approved (1), 46 provisionally accepted (9), 29 rejected (4)
- **<http://thebigtreeplant.direct.gov.uk>**
- **<http://www.forestry.gov.uk/forestry/INFD-8BHL6E>**

FTPE Green Grants

- £26,000 available in 11/12
- Maximum £2,000 per application
- Preferably close to FTPE stations or line of route
- Closing date 14th October 2011
- Catherine.johnston@firstgroup.com



- Landfill Community Fund – eg SITA in the Dales, Biffaward
- S106 agreements – eg HEYwoods
- Lottery – HLF, Big Lottery Fund – many examples of local authorities restoring parks & open spaces
- Tree Council – ‘Trees for Schools’ & ‘Community Trees’
- Woodland Trust – ‘MOREwoods’ scheme

<http://frontpage.woodland-trust.org.uk/communitywoodlandnetwork/publications/othergrants.htm>

<http://www.rfs.org.uk/about/grants-for-trees>

Questions?

Vince Carter

vince.carter@forestry.gsi.gov.uk

01904-448778